

# **IJ-6080 Ink-Jet Transaction Printer USB Mini-Driver Installation Guide**

## **Addmaster Corporation**

Address: 225 East Huntington Drive  
Monrovia, CA 91016

Web: [www.addmaster.com](http://www.addmaster.com)  
Phone: (626) 358-2395  
FAX: (626) 358-2784

Document: ij6usb\_minidriver\_rev2.doc (Source)

Revision: 1 May 7, 2002  
2 April 26, 2006

Notices: Subject to change without notice.  
© Copyright 2006, Addmaster Corporation

## Table of Contents

<b>1</b>	<b>INTRODUCTION</b>	<b>3</b>
1.1	Documentation	4
1.2	Emulations and Printer Models	4
1.3	Supplies and Ordering Information	4
<b>2</b>	<b>INSTALLATION FOR WINDOWS XP</b>	<b>5</b>
2.1	Overview	5
2.2	Step 1 - Preparation	5
2.3	Step 2 – Removing Old USB & Print Drivers	5
2.4	Step 3 – Installing USB Communications Drivers	6
2.5	Step 4 – Installing IJ-6080 Print Driver	9
2.6	Driver Installation Verification	13
2.7	Check Out & Test	14
2.8	Test with Sample Documents	14
2.9	Windows XP Diskette Contents	15
<b>3</b>	<b>DOCUMENT REVISION INFORMATION</b>	<b>16</b>

## 1 Introduction

The IJ-6080 series of Ink-Jet Transaction Printer are modern, high-reliability transaction printers designed for use in financial, POS and other applications. The printers are available with serial, parallel, or USB interfaces.

This document provides instructions describing how to add USB print driver support for the IJ-6080 to a Windows XP based computer.

Addmaster provides two different types of drivers:

<b>Mini-driver</b>	Typical Windows printer driver. Status back is not supported. Programming is optional.
<b>Bi-directional</b>	User communicates via bi-directional serial data stream with printer. Status back is supported. Programming is required.

**Note:** *This document describes the Mini-Driver solution only.*

**Note:** *Most users require the Mini-Driver only. Do not use the Bi-directional driver unless specified by your applications software vendor.*

Only Windows XP support is given. The drivers should work fine in most Windows 2000 applications.

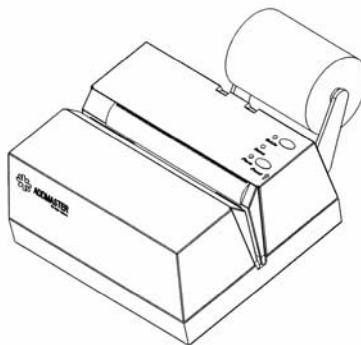


Figure 1.1 Addmaster IJ-6080

## 1.1 Documentation

Other available documentation concerning the Addmaster IJ-6080 series printers is:

- *IJ-6080 Ink-jet Transaction Printer Specification*
- *IJ-6080 Ink-jet Transaction Printer User's Guide*
- *IJ-6080 Ink-jet Transaction Printer Flash Programming Guide.*

Contact the factory for these documents.

## 1.2 Emulations and Printer Models

There are various models of the IJ-6080 series printers. These models are all supported by the drivers provided on the diskette.

<i>Model</i>	<i>Features</i>
IJ-6080	Journal, Multi-Line Validation printing
IJ-6160	Multi-Line Validation printing only
IJ-6080	Journal printing only.

For each printer, Addmaster makes available various emulations. These emulations make the printer operate and communicate similar to other existing printers. These emulations are intended for applications where existing software is designed to communicate with a particular printer.

The printer drivers provided on this diskette will work only with Addmaster standard printer emulation and not with any other emulations. Contact the factory if there are any questions.

## 1.3 Supplies and Ordering Information

Documentation and supplies may be ordered directly from the factory. Contact Addmaster at:

Addmaster Corporation  
225 E. Huntington Drive  
Monrovia, CA 91016  
USA

Phone: (626) 358-2395  
FAX: (626) 358-2784  
Web: [www.addmaster.com](http://www.addmaster.com)

## **2 Installation For Windows XP**

### **2.1 Overview**

Follow the step-by-step instructions in this Section when installing the software driver for Windows XP machines. Installation consists of these steps:

1. Preparing the IJ-6080 printer and the computer for installation.
2. Removing any older IJ-6080 series printer drivers and any older Addmaster USB drivers.
3. Installing USB printing support.
4. Installing IJ-6080 series printer driver.

### **2.2 Step 1 - Preparation**

Prepare for installation by collecting software and documentation:

1. Have a copy of these instructions handy for reference.
2. Have the installation diskette containing the USB and printer drivers handy. Copy the files to a new directory on your PC. We suggest something you can remember. Perhaps:
  - c:\Addmaster
  - c:\ij6080 drivers
3. Turn-off the IJ-6080 printer.
4. Connect USB cable to computer.
5. Connect USB cable to IJ-6080 printer. Leave power off.

### **2.3 Step 2 – Removing Old USB & Print Drivers**

If you have older IJ6080 printer drivers or USB drivers, remove them at this time. This probably does not apply to you.

## 2.4 Step 3 – Installing USB Communications Drivers

The next step involves loading the device driver responsible for communications on the USB port with the IJ-6080 printer. This can be accomplished only with an IJ-6080 USB printer on hand and cannot be done by proxy. Each step must be followed carefully.

You should have an *un-powered* IJ-6080 cabled to you PC at this point (see Preparation).

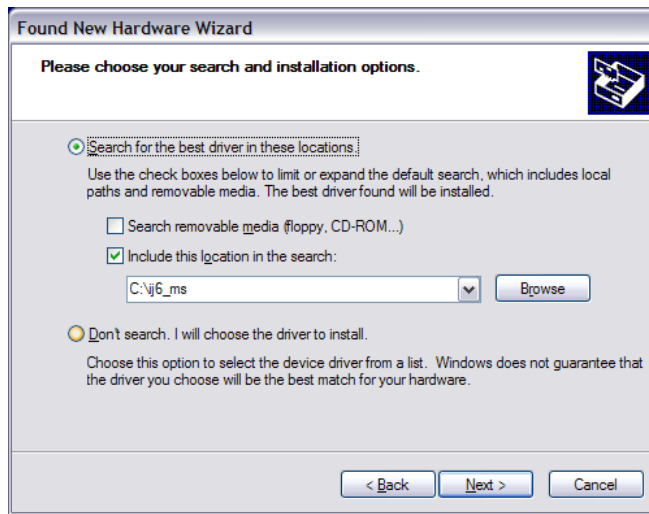
1. Power-on the IJ-6080 printer. Windows XP will detect the printer and display “Found New Hardware” message for “Unknown Device.” Select “Not at this time” and hit “Next”.



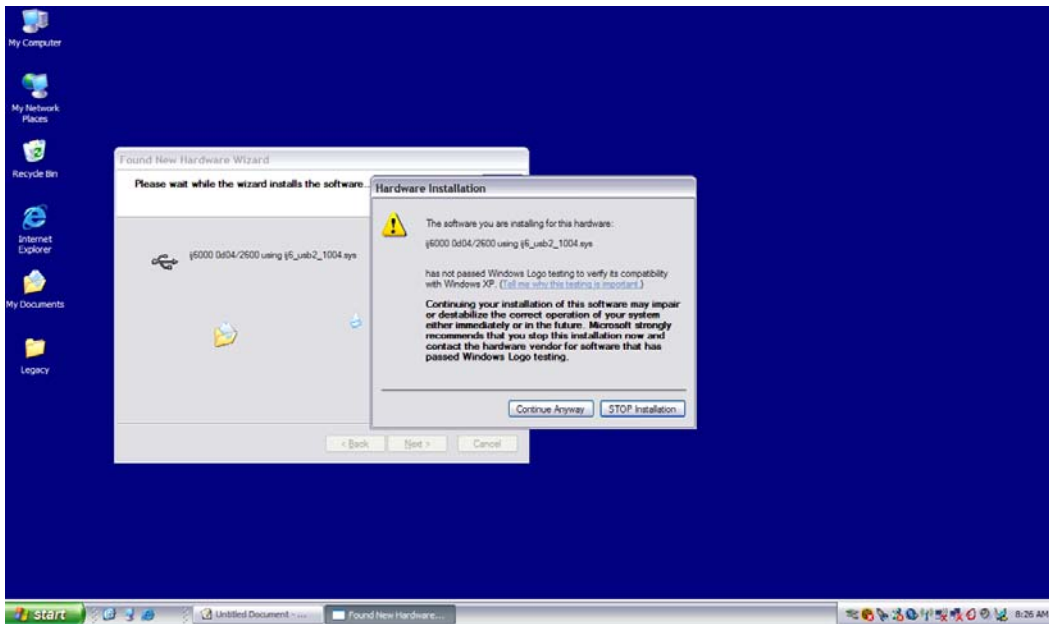
2. At the next screen, select “Install from a list or specific location” and click “Next.” You have previously saved the drivers to your hard-drive. You will use these.



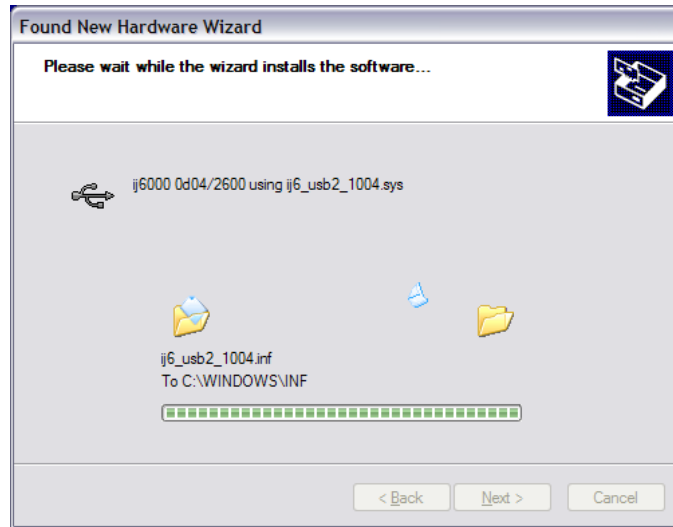
- At the next screen, select the box "Include this location" and then "Browse" to the directory where you have stored the drivers. In the example below, the drivers are stored in the directory "c:\ij6\_ms". Click "Next."



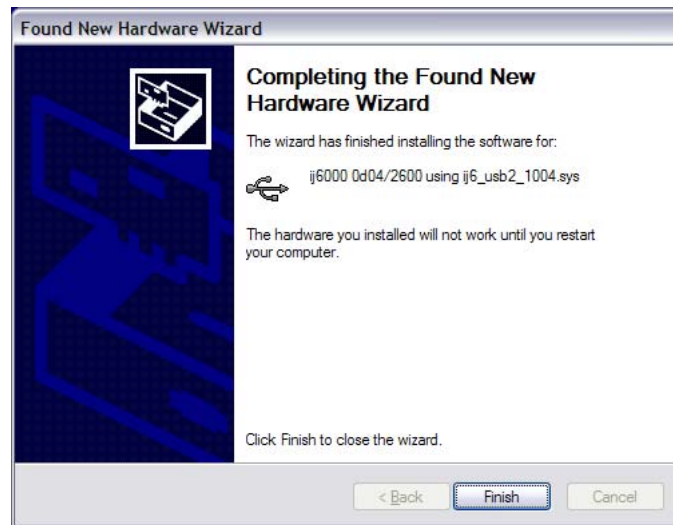
- Windows will begin installing the driver and display a copying files message. A screen will appear informing you that the driver is not signed. Click "Continue Anyway".



- A number of files will be copied and as this is occurring Windows will inform you of the progress.



7. When done with the USB communications drivers. A final prompt will tell you when this process is complete.



After the USB drivers are loaded, the printer will momentarily disconnect from the USB bus and then reconnect itself.

**NOTE:**

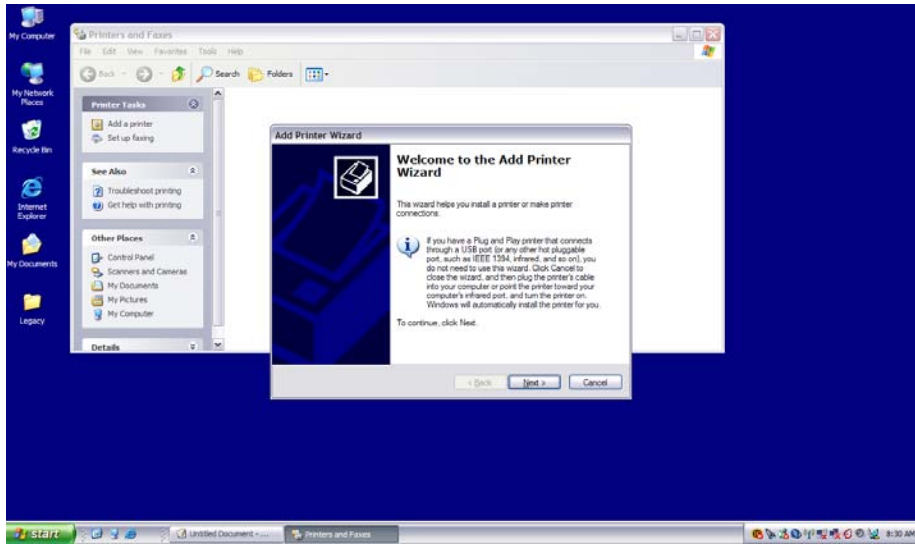
A second driver will be automatically loaded at this time. This driver provides the "USB Printing Solution" from Microsoft and is part of Windows XP.



## 2.5 Step 4 – Installing IJ-6080 Print Driver

This step involves loading the printer driver responsible for composing the printer commands that are required to control printer operation, font selection, graphics imaging, and other like functions. The output of the printer driver is transmitted to the IJ-6080 printer via the USB drivers just previously loaded.

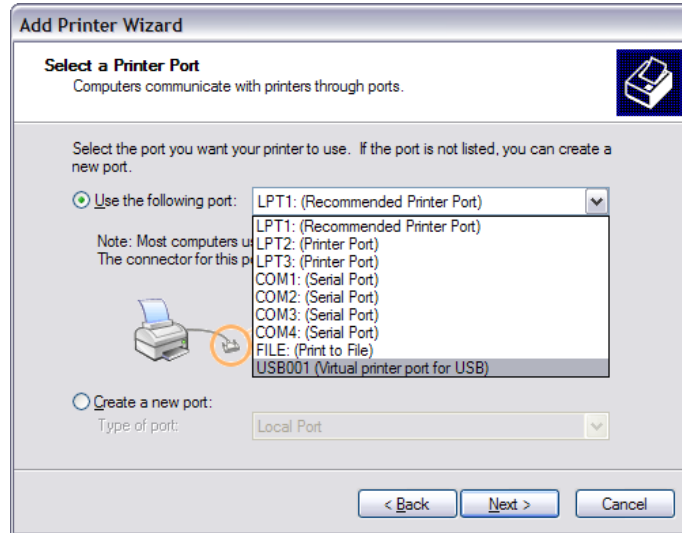
1. Open the Printers folder. Click {Start, Settings, Printers}.
2. Select "Add Printer". Windows will display the Add Printer Wizard. Click "Next" to begin.



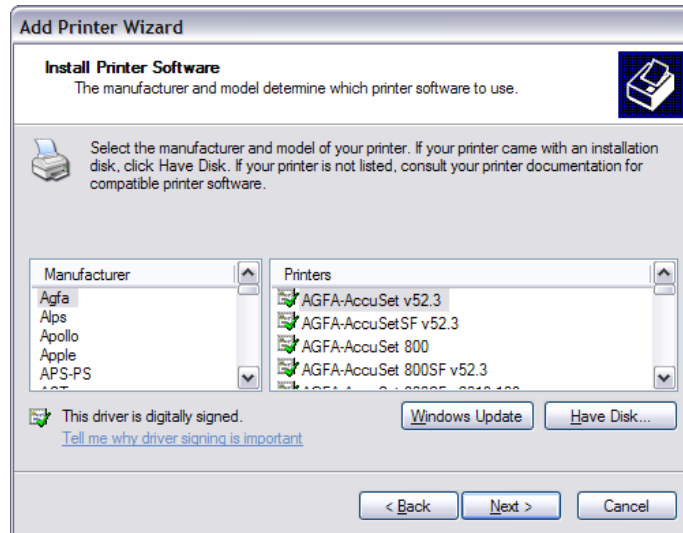
3. Choose "Local Printer," uncheck "Automatically detect," and click "Next."



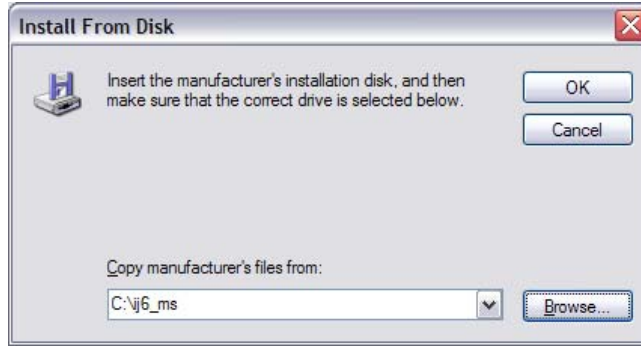
- You will be asked which port the new printer will be connected to. Select the USB00n Virtual printer port. You may have more than one virtual port. Connect to the latest. Click "Next."



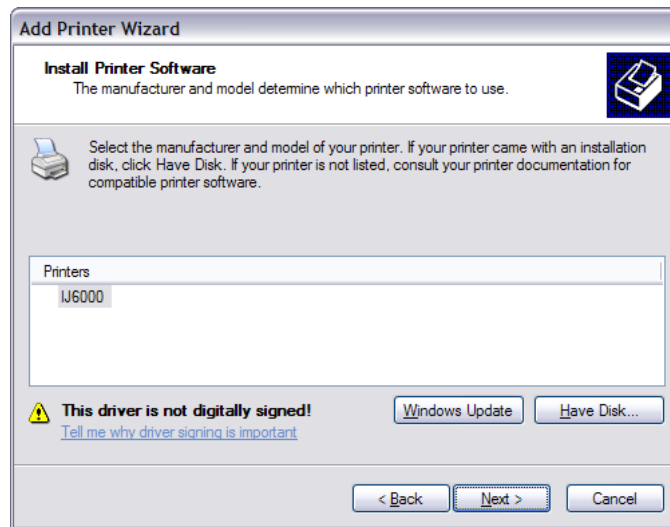
- Select "Have Disk" when prompted for printer make and model.



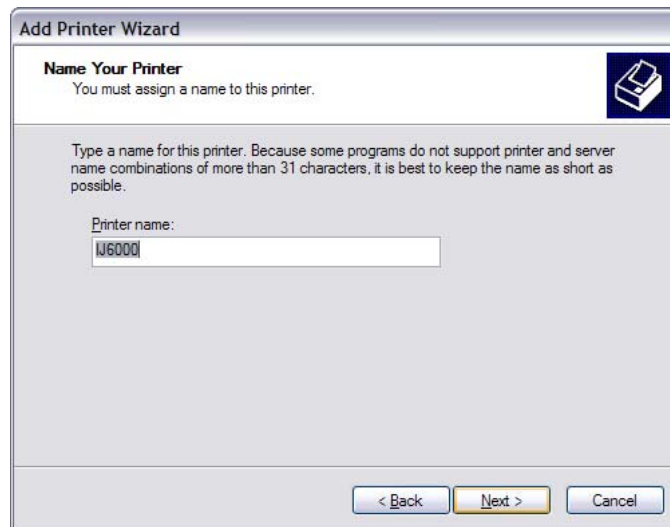
- When asked to insert driver disk, use the "Browse" button to select location of driver directory. This is the directory where you stored the drivers initially. In the example below, the directory "c:\ij\_ms" is where we stored the drivers. Click "OK."



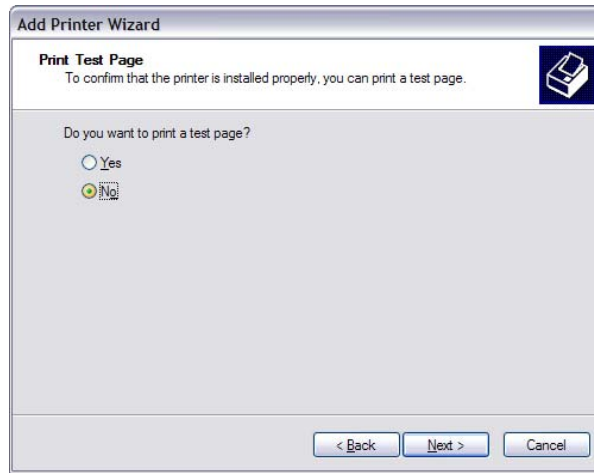
- The Wizard will display the name of the printer type for which installation files were found. Highlight the "IJ6000" printer. Click "Next."



- You are allowed to rename the printer. This is not recommended. Please leave it as IJ6000 unless otherwise instructed. Click "Next".



9. You may if you wish choose to print a test page. This is not necessary nor recommended. Click "Next".



10. The copy process will continue. A screen indicating completion will appear as shown below. Click "Finish."



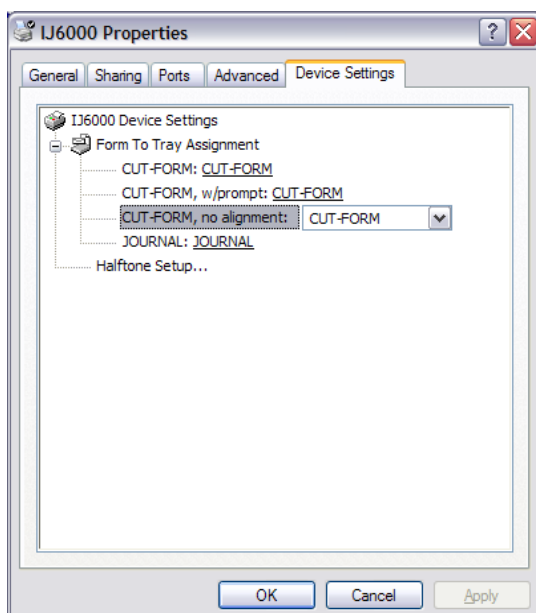
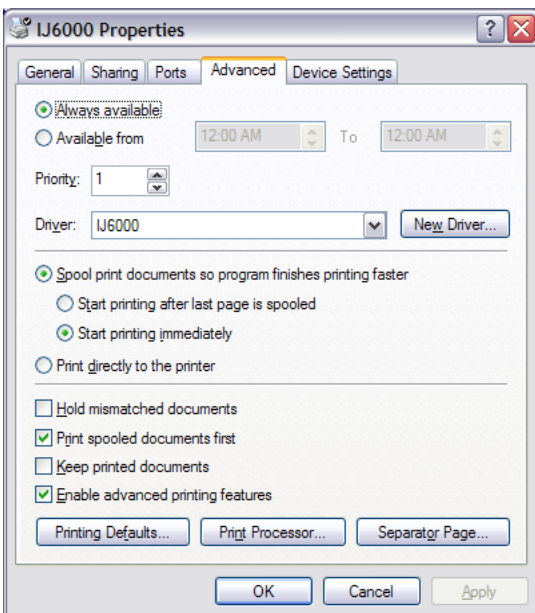
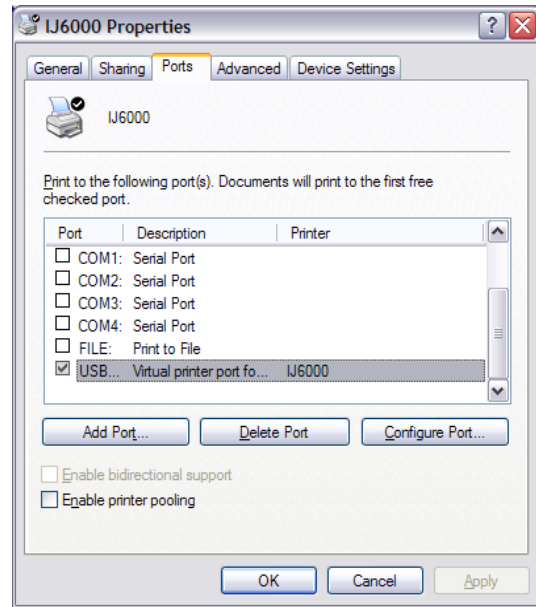
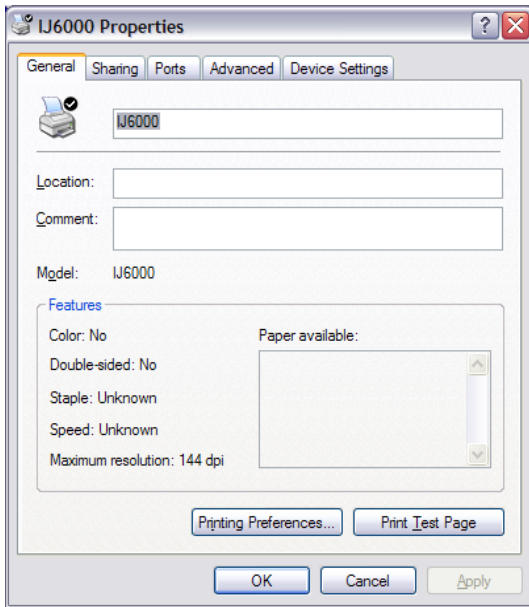
11. When informed the driver has not been tested by Microsoft, click "Continue Anyway." Don't worry, we have tested it. You are done.



## 2.6 Driver Installation Verification

If you want to verify that the driver is loaded properly, follow these steps:

1. Open the Printers folder. Click {Start, Settings, Printers}.
2. Right Click on the IJ6000 Printer and select "Properties"
3. The Properties screens should appear. Check that they match the following. If they do not, modify them as shown.



## 2.7 Check Out & Test

You can now choose to print a "Test Page" at the driver printer properties screen. The test page may print either on the journal or the cut-form depending on the default paper source you have chosen. If the test page is for the form, the "FORM" led light on the printer will illuminate.

If the test page fails to print properly check these items:

- a) If multiple "USBnnn Virtual Printer Ports" appeared for the IJ-6080, try another one and repeat the test.
- b) Check printer DIP switches and assure they appear in the default state.
- c) Make sure the IJ-6080 printer is not in its self-test mode. Turn it on and off. Wait for USB drivers to automatically reset. Try the test over again.
- d) Make sure paper is loaded and the "ONLINE" led is illuminated.

**NOTE:**

*Test Page is abbreviated. The IJ-6080 printer has a maximum print field of 2.75 inches in width. This is not large enough to print the entire Test Page.*

## 2.8 Test with Sample Documents

Two sample documents that can be printed with the WordPad accessory are provided.

- Journal.rtf - Prints a sample journal tape.
- Validation.rtf - Prints a sample cut-form.

To use these, open WordPad. Then select "File/Open" browse to the driver directory where you have stored the drivers and select the desired test document.

Go to page setup and assure that:

- The IJ6000 printer is selected,
- all the margins are 0 inches,

Print the document and view the results.

## 2.9 Windows XP Diskette Contents

The following files are distributed for Windows XP applications.

<i>File Name</i>	<i>Use</i>
lj6_usb_minidriver_installation.pdf	Installation instructions. This file.
lj6_usb1_1004.inf lj6_usb1_1004.sys	Installation INF and driver file for: Older IJ-6080 printers.
lj6_usb2_1004.inf lj6_usb2_1004.sys	Installation INF and driver file for: Current IJ-6080 printers. Used with printers made after March 2006.
Oemsetup.inf	Setup information for the printer driver.
IJ6080.dll	Printer driver responsible for controlling operation, fonts, graphics, and other features for the IJ-6080 series printer with there standard emulations.
RASDD.dll RASDDUI.dll RASDDUI.hop	Microsoft's Mini-driver.
Journal.doc	Test document for WordPad
Validation.doc	Test document for WordPad

### 3 Document Revision Information

<b>Revision</b>	<b>Date</b>	<b>Changes / Modifications</b>
1	10-22-2001	Initial release in PDF format.
2	04-26-2006	Changes required by new release of Addmaster's USB drivers for XP.